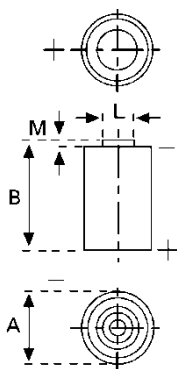


**Data Sheet**



<b>Type Number</b> .....	6127
<b>Designation IEC</b> .....	---
<b>System</b> .....	Li-Manganese dioxide / Organic Electrolyte
<b>UL Recognition</b> .....	MH13654 (N)
<b>Nominal Voltage</b> .....	3 V
<b>Typical Capacity C</b> .....	950 mAh
Load 5.6 kOhm, at 20°C down to 2 V	
<b>Weight (approx.)</b> .....	11,5 g
<b>Volume</b> .....	5 ccm
<b>Coding</b> .....	Date of Manufacturing Month / Year
<b>Temperature Ranges</b>	min                      max.
Storage .....	-55 °C                      70 °C
Discharge .....	-30 °C                      75 °C*
<b>Dimensions</b>	min                      max.
Diameter (A) .....	14,15                      14,45
Height (B) .....	25,09                      25,30
Shoulder Diameter[L].....	7,00
Shoulder Height [M].....	0,90

**Typical Capacities (at 20°C)**

Discharge Type	Load	End Voltage:	2.0 V
Continuous 24h/d,7d/w	5600 Ω	Time:	1860 h
		Capacity [mAh]:	950
		Energy [mWh]:	2700
Continuous 24h/d,7d/w	2000 Ω	Time:	670 h
		Capacity [mAh]:	930
		Energy [mWh]:	2600
Continuous 24h/d,7d/w	1000 Ω	Time:	335 h
		Capacity [mAh]:	900
		Energy [mWh]:	2400
Constant current	50 μA	Capacity [mAh]:	1000

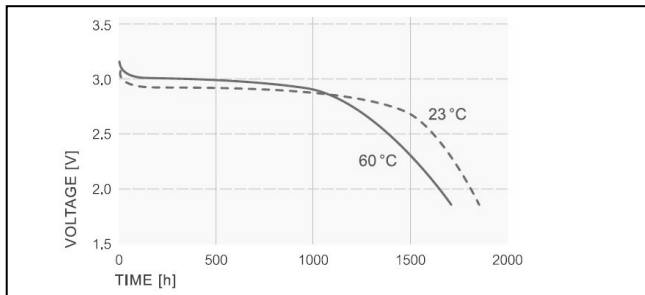
\* Contact VARTA if the application is intended to be outside the range of -30°C to +75°C.

*Information and contents in this data sheet are for reference purpose only. They do not constitute any warranty or representation and are subject to change without notice. For most current information and further details, please contact your VARTA representative.*

## Data Sheet

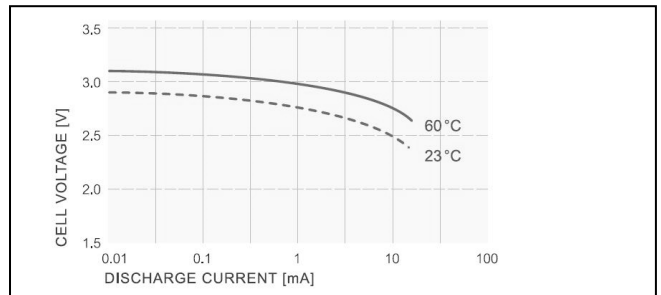
### Performance Data:

- **Temperature Characteristics\***



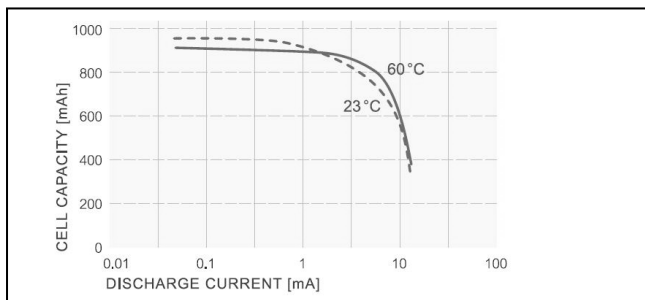
\*Discharge Load 5.6 kΩ

- **Operating Voltage vs. load resistance\***

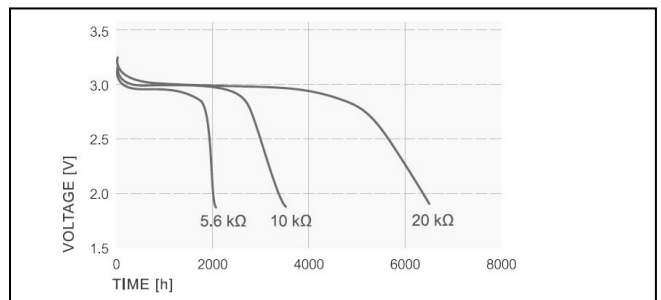


\*Discharge depth 50%

- **Capacity vs. load resistance**



- **Discharge Characteristics\***



\* at room temperature 21°C

- Self-discharge rate < 1% at room temperature
- Storage life > 10 years
- Operating life\* > 10 years

\* depending on environmental condition and energy consumption

*Information and contents in this data sheet are for reference purpose only.  
They do not constitute any warranty or representation and are subject to change without notice.  
For most current information and further details, please contact your VARTA representative.*